



HARMON CUSTOMS

www.harmoncustoms.com

LED BACKLIT CENTER CONSOLE INSTALL INSTRUCTIONS



Installation should be done by a professional. I will not be held liable for any damage you cause due to this modification. You are doing this at your own risk.

If you have an issue or question text or call us at (702) 366-6352

Tools needed:

10mm socket/ratchet

Interior pry tool or equivalent

Phillips screw driver

Heat gun or lighter

-Move front seats all the way forward

-Disconnect negative battery terminal. DO NOT SKIP THIS STEP

-Using an interior pry tool or equivalent remove the back side of the center console by prying up and then back, it's held in by plastic clips just work it along the edge slowly. Leave the 12v plug connected and just let the panel lay on your backseat floor.



-Remove you old, boring, dull center console lid emblem by using your pry tool or equivalent. It just pops out.



-Clean the area the new center console badge will contact using isopropyl alcohol.



-Remove the center console latch by removing the two screws.



-Remove bottom of center console lid by removing the 18 screws. There are a couple at the bottom that are hard to see and a couple that were under the latch.

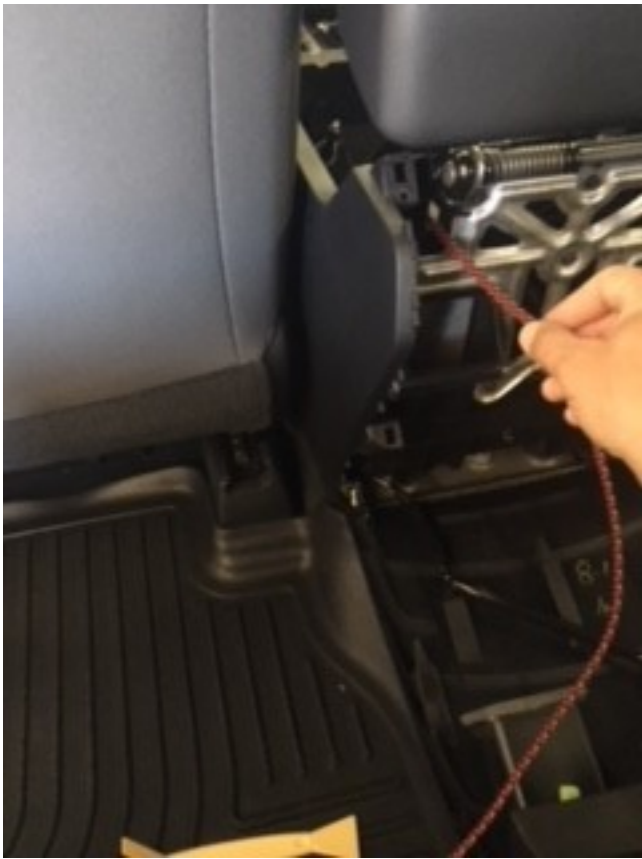
-Remove the double sided tape from your new emblem. There is a big piece in the middle on the light strip and two small pieces on each end. The light strip double sided tape is not strong, so I added the two small pieces of 3M VHB tape. Use a razor blade to catch the edge in order to remove.

-Run the wire from emblem through the left (drivers side square hole). Stick the emblem in place.



-Double check and make sure you disconnected the negative battery terminal!

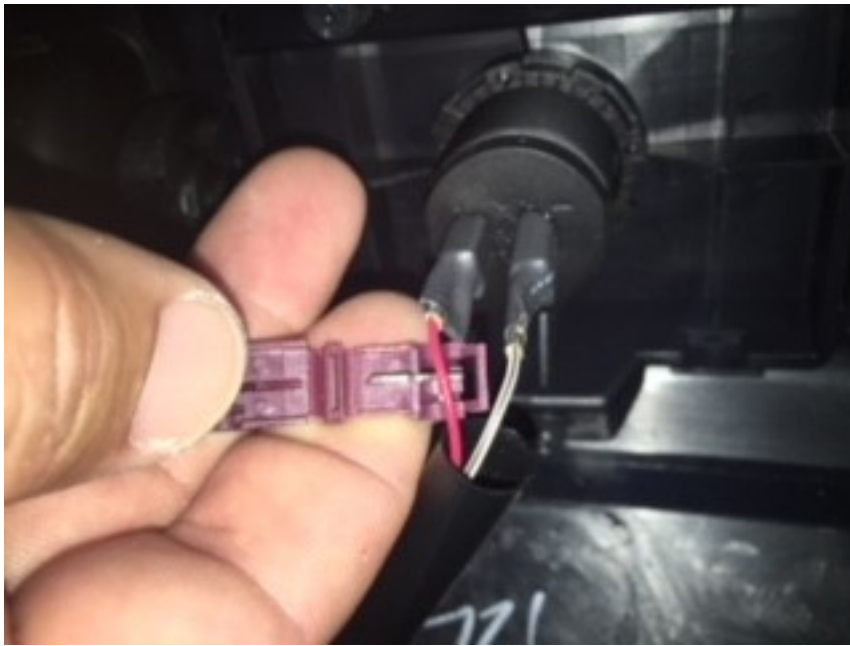
-Run the wiring harness end with the pins on it through the backside of the center console, up through the lid, install the heat shrink tubes over the pins and connect the pins. Push them together so they are tight.





-Using your heat gun or lighter, shrink the heat shrink. Make sure no bare metal is showing on the pins.
DO NOT SKIP THIS STEP! DO NOT APPLY POWER WITHOUT THE HEAT SHRINK PROPERLY APPLIED.

-Install the t-taps on the wires from the 12v plug that's on the backseat side of the center console as shown. Red to red, black to black. Pay particular attention to ensure the wire is in the middle as shown. Squeeze tightly.



-Hook up the leads on the wiring harness to the t-taps.



-Double check the connections, and double check there is no bare metal where you installed the heat shrink.

-Connect negative battery terminal.

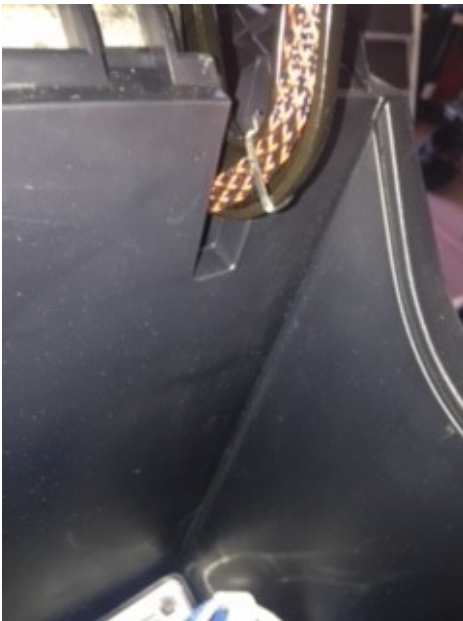
-Insert your key in the ignition and turn it to on. Make sure your badge lights up.

-Turn your key to off.

-Route/zip tie the wiring as shown starting from the lid down and back to the backside of the center console.

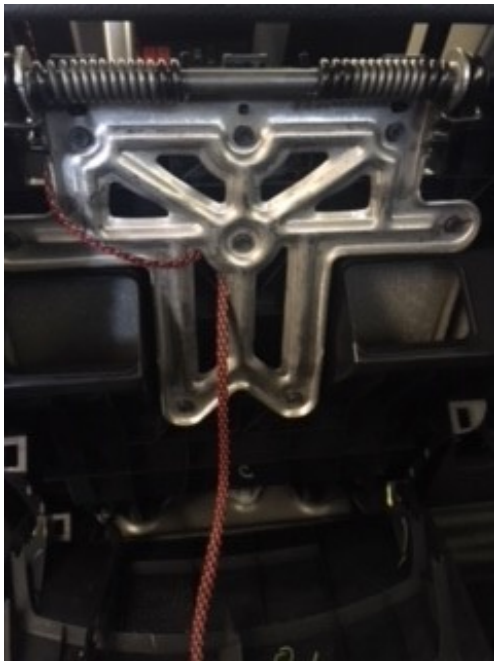


-To avoid pinching pay particular attention to the wire routing and the placement of the zip tie head on the hinge.



-Route/zip tie the wiring on the backside of the center console as shown.

-Tuck the wiring loop into the support frame as shown to avoid pinching when you close the cover back up.



-Install bottom of lid.

-Install backside of center console.

-Remember you can always change the logo cover to another design and the lens to any color.

-ENJOY!

www.harmoncustoms.com